



KINTEK SOLUTION

Cadinho De Grafite De Elevada Pureza Catálogo

Entre em contato conosco para mais catálogos de **Preparação da amostra**, **Equipamento térmico**, **Consumíveis e materiais de laboratório**, **Equipamento bioquímico**, etc...

KINTEK SOLUTION

PERFIL DA EMPRESA

>>> Sobre nós

Kintek Solution Ltd is one technology orientated organization, team members are devoted to probing the most efficient and reliable technology and innovations in the scientific researching equipment, fields like biochemical reacting, new materials researching, heat treatment, vacuum creating, refrigerating, as well as pharmaceutical and petroleum extracting equipment.

In the past 20 years, we earned rich experiences in this researching equipment field, we are capable to supply both the equipment and solution according to customer's needs and realities, we have also developed lots of customer tailored equipment according to a specific working purpose, and we have lots of successful projects in many universities and institutes from different countries, like Asia, Europe, North and South America, Australia and New Zealand, Middle East, and Africa.

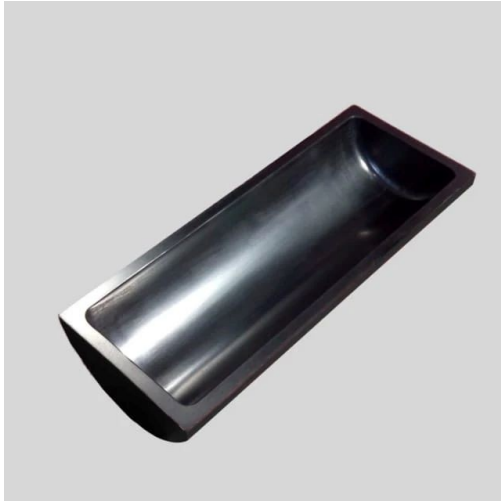
Profession, quick response, hard working, and sincerity is a remarkable label of our team members working attitude, which earn us a sound reputation among our clients.

We are here and ready to service our clients from different countries and regions, and share the most efficient and reliable technology together!



Barco De Grafite De Carbono - Forno Tubular De Laboratório Com Tampa

Número do item: KM-D10



Introduction

Os fornos tubulares de laboratório com cobertura de carbono e grafite são recipientes especializados ou recipientes feitos de material de grafite concebidos para suportar temperaturas extremamente elevadas e ambientes quimicamente agressivos.

[Saiba mais](#)

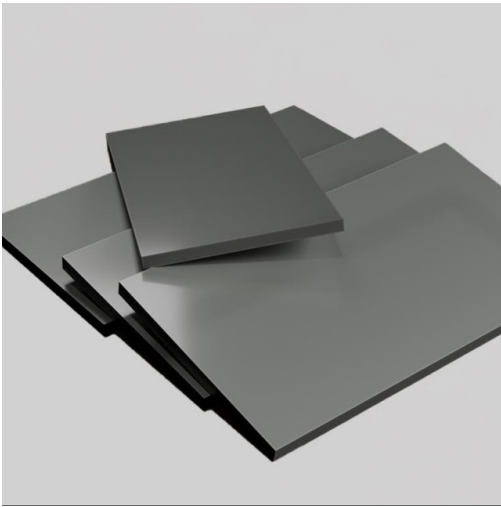
diâmetro / altura / comprimento / espessura

35*18*100*3,5mm

45*150*23*5mm

Placa De Carbono Grafite - Isostática

Número do item: KM-D11



Introduction

[Saiba mais](#)

espessura / largura / comprimento

1-50*100*100mm



Kintek Solution

Sede: No.89 Science Avenue, High-Tech Zone,
Zhengzhou, China

Escritório em Hong Kong: 300 Lockhart Road, Wan Chai,
Hong Kong

Escritório do Canadá: Boulevard Graham, Mont-Royal,
QC, H3P 2C7, Canadá

